

**EXTENDO 944X**

**PETTIBONE**

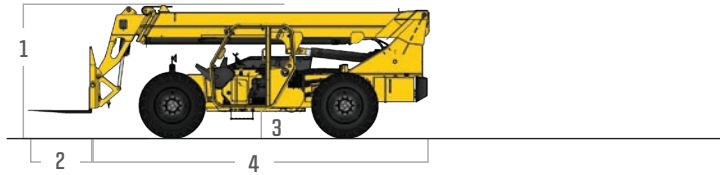
# 944X **EXTENDO**

Defined by rugged design and efficient operation, the Pettibone® Extendo™ 944X offers superior longevity and performance for the long haul. Known for leading hydraulics that provide exceptional cycle times and controllability, the Extendo 944X also offers strong machine and boom stability for enhanced safety.

**X-SERIES**

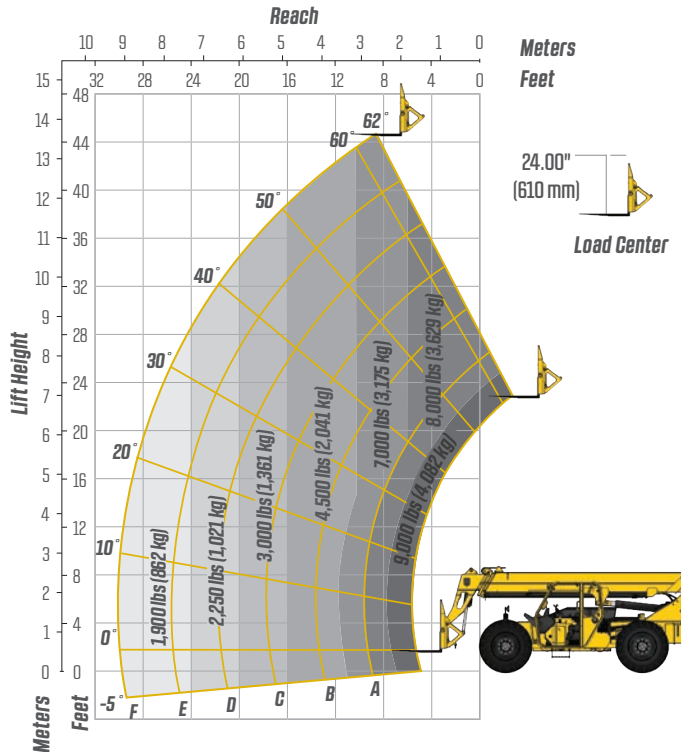


# SPECIFICATIONS



DIMENSIONS		
1	Overall Height	8' 3" (251 cm) boom down
2	Fork Carriage	48" (122 cm) standard
3	Ground Clearance	18" (46 cm)
4	Overall Length	22' (671 cm) to fork frame
	Overall Width	8' 6" (259 cm)
	Pallet Forks	2.25x4x48" standard
	Approximate Operating Weight	22,000 lbs (9,979 kg)
ENGINE		
	Model/Power	74 HP (55 kW) Cummins® Tier 4 turbo diesel with DOC muffler
	Fuel Tank	30 gal. (114 L)
HYDRAULICS		
	System	Pressure comp, axial piston pump
	Features	Fully proportional functions, auxiliary boom tip hydraulics, quick disconnect for attachments
	Controls	Single joystick, pilot operated
PERFORMANCE		
	Max Load Capacity	9,000 lbs (4,082 kg)
	Maximum Lift Height	44' 6" (1,356 cm)
	Landing Height	41' (1,250 cm)
	Maximum Forward Reach	30' (915 cm) at 24" LC
	Below Grade Reach	3' (92 cm)
	Maximum Travel Speed	15.2 mph (24.5 km/h)
	Turning Radius	14' 1" (429 cm)
	Drawbar Pull (GVW)	21,700 lbs (9,843 kg)
	Frame	24° of leveling (12° right and left), rear axle stabilization system
	Transmission	Dana® VDT12000 Series, 3-speed Powershift, forward & reverse
	Axles	Dana 212 Series; 4-wheel drive, 45% limited slip front differential
	Steering	4 wheel, 2 wheel, and crab steer
	Brakes	Oil-immersed inboard disc service brakes, integral front SAHR park brake
	Tires	13.00 x 24, 16 ply, G2 tread air-fill standard
	Boom	3-section, slide pad; automatic fork leveling without slave cylinder

# LIFT PERFORMANCE



# FEATURES & OPTIONS

## OPERATOR CAB

X-Command® telematics  
Adjustable suspension seat with seat belt  
Single multifunction hydraulic joystick  
Analog/LCD gauge cluster

Split door design  
Flat, bolt-in glass  
Lockable storage area under seat

## AVAILABLE ATTACHMENTS

Pallet, lumber or block forks  
Utility bucket  
Side tilt carriage (+/- 10°)  
Truss boom

Standard carriage  
Side-swing carriage (+/- 60°)  
Hydraulic fork positioning carriage

## OPTIONS

Premium gauge cluster w/7" digital display  
Rear-view camera system  
High output LED lighting package  
Solid or foam filled tires  
Various tire tread options available

Enclosed cab, HWD (A/C available)  
117 HP Cummins diesel engine w/SCR & DEF  
Sling hook  
Electrical to boom tip  
Bolt-on rear pintle hitch

\* Specifications are subject to change.

**PETTIBONE®**

## PETTIBONE, LLC

1100 Superior Avenue  
Baraga, MI 49908

P: 800.467.3884  
info@gopettibone.com  
www.gopettibone.com



1 Year

2 Years

3 Years

Full machine and attachment

Powertrain and major hydraulic components

Machine structure

# WARRANTY