

PETTIBONE®

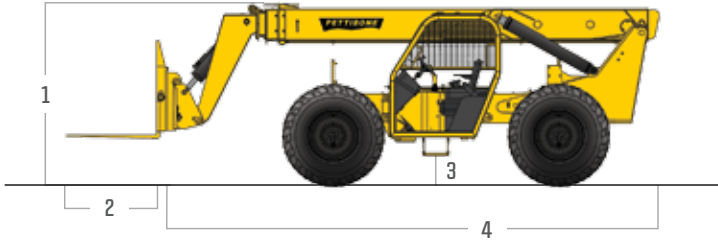
» 1144 EXTENDO

SPECIFICATIONS



Pettibone's Extendo 1144 telehandler offers unmatched visibility from the cab to provide safer and more efficient operation for any material handling job. Exceptional reach and lift capacity maximize productivity, while a rapid response hydraulics system offers superior machine control. The Extendo 1144 also features a rear axle stabilization system and 4-wheel drive for enhanced maneuverability.

SPECIFICATIONS



DIMENSIONS

1	Height	7' 7.5" (232 cm) boom down
2	Fork Carriage	48" (122 cm) standard
3	Ground Clearance	18.8" (48 cm)
4	Length	22' (671 cm) to fork frame
	Overall Width	8' 6" (259 cm)
	Pallet Forks	2.25x4x48" standard
	Total Operating Weight	26,130 lbs (11,852 kg)

ENGINE

Model/Power	110 HP (82 kW) Cummins Tier III turbo diesel with electronic control & protection
Fuel Tank	32.6 gal. (123.4 L)

HYDRAULIC SYSTEM

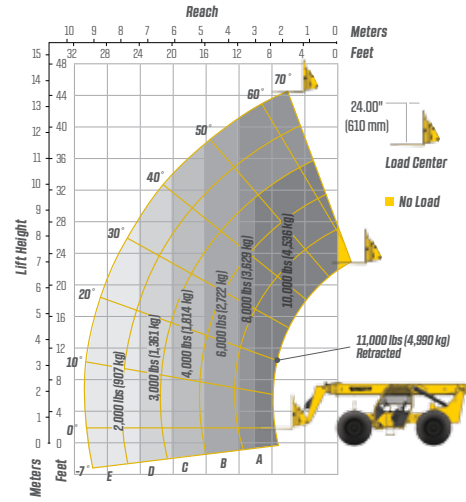
System	Rapid response hydraulic
Features	Piston pump, auxiliary boom tip hydraulics, quick disconnect for attachments
Controls	Single joystick for all boom functions

PERFORMANCE

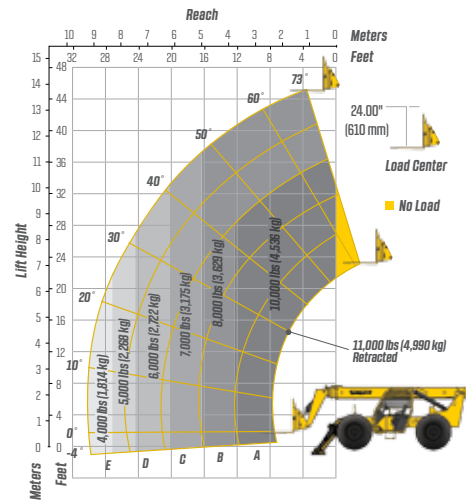
Max Load Capacity	11,000 lbs (4,990 kg)
Maximum Lift Height	44' 6" (1,356 cm)
Maximum Forward Reach	30' 3" (922 cm) at 24" LC
Below Grade Reach	3' 3" (99 cm)
Maximum Travel Speed	20 mph (32 km/h)
Turning Radius	12' 6" (381 cm)
Frame	24° of leveling (12° right and left); rear axle stabilization system; fits under 8' doorway
Transmission	Fully modulated Carraro Powershift, 4-speed forward & reverse; parking brake engaged transmission declutch
Axles	Carraro outboard planetary; 4-wheel drive
Steering	4 wheel, 2 wheel, and crab steer
Brakes	Oil-immersed inboard disc service brakes, integral park brake
Tires	14.00 x 24, 16 ply
Boom	Automatic fork leveling with 0 slave cylinders; 2 wide stance, heavy-duty lift cylinders

LIFT PERFORMANCE

Standard Fork Frame



Standard Fork Frame (Optional Outriggers Down)



FEATURES & OPTIONS

OPERATOR CAB

Unmatched visibility Adjustable suspension seat with seat belt	Fully adjustable right-side armrest Full set of gauges for instant machine status
---	--

AVAILABLE ATTACHMENTS

Pallet, lumber and block forks Side tilt carriages +/- 10° Side-swing carriage	Truss boom Utility buckets
--	-------------------------------

OPTIONS

Light packages Foam-filled tires Solid tires	Enclosed cab (HWD) Air-conditioned cab Outriggers
--	---

* Specifications are subject to change.

PETTIBONE

PETTIBONE, LLC
1100 Superior Avenue
Baraga, MI 49908

P: 800.467.3884
info@gopettibone.com
www.gopettibone.com



1 Year	Full machine and attachment
2 Years	Powertrain and major hydraulic components
3 Years	Machine structure

WARRANTY