

PETTIBONE®

HEAVY METAL

THE LATEST NEWS FROM PETTIBONE



15

CARY-LIFT AT ICUEE
PETTIBONE ON YOUTUBE
X-SERIES SERVICE SCHOOL

CARY-LIFT: IT'S NOT A WHEEL LOADER. IT'S MUCH BETTER.



WHAT: CARY-LIFT 204i
WHERE: BOOTH N2006
WHEN: OCT 1-3, 2019

Pettibone will exhibit the Cary-Lift 204i during the upcoming ICUEE show in Louisville. The original Cary-Lift was developed almost 70 years ago, and this machine remains a unique fixture in the material handling world today.

For businesses involved in moving and placing pipe, poles, logs, scrap or other similar loads, the Cary-Lift offers a purpose-built design for exactly these types of lifting tasks.

It's no secret that many companies instead turn to a wheel loader – a dirt mover that can be equipped with fork and grapple attachments to perform secondary lifting functions. It's also no secret that operators who use a wheel loader for lifting applications have to sacrifice a level of safety and performance on the job.

Visibility. Transporting pipe or other loads around a yard generally requires the machine to be driven while its load is lifted up in the air. Operator visibility in a wheel loader is obstructed by lift arms located directly in front of the vehicle.

By contrast, the Cary-Lift has no components obstructing the forward view, thanks to an overhead lift arm design where the arms are mounted behind the cab.

Stability. A wheel loader's articulated steering is not conducive to carrying heavy loads and turning at the same time. It can lose up to 50% of its rated load capacity when going into a turn. Unfortunately, many operators aren't aware of these changing dynamics while turning, and these loaders sometimes wind up tipping over as a result.



Rather than an articulating joint, the Cary-Lift has a solid steel frame that allows it to take full loads into sharp turns without affecting load capacity or stability.

Gondola Cars. Overhead lifting cranes, like gantry cranes, are commonly used to remove pipe from gondola cars, but they require a worker to physically climb down inside and strap the pipe manually.

The Cary-Lift keeps people out of the gondola car and out of danger. The machine's overhead lift arms have the correct geometry to tilt the forks down 90 degrees and scoop the pipe out.

See the Cary-Lift 204i at ICUEE, or visit gopettibone.com for more information.





X-SERIES SERVICE SCHOOL OFFERS HANDS-ON TRAINING FOR DEALERS



Pettibone has launched a new **X-Series Service School** program to provide live, in-person machine training opportunities for members of the dealer network. Hosted by Pettibone dealers at various regional locations, the service school is specifically focused on Pettibone's next gen X-Series Extendo and Traverse telehandlers.

The X-Series Service School consists of one-day sessions that cover product information in a classroom style setting, in addition to hands-on training with the machines. Trainings are led by Brian Anderson, a senior service technician who's been with Pettibone for 13 years. Topics include an overview of hydraulic system and components, and tutorials on servicing the booms for all X-Series telehandlers and the traversing carriage found only on Traverse models.

"We try to do as much training as we can in the field," said Anderson. "Our parts and service department team works hard to deliver personalized support for all our dealers and customers, and the X-Series Service School is another piece we've added to enhance the experience for those responsible for maintaining or operating Pettibone equipment."

Recent training days were held at Pettibone headquarters in Baraga, Michigan, for the Midwest region, at Power Pro Equipment in New Holland, Pennsylvania, for the Northeast region, and at ARDCO Equipment in New Iberia, Louisiana, for the Southern region.

A Western region school session is scheduled for October 8 at Landmark Equipment in Portland, Oregon. Please email sandral@gopettibone.com for more information.



PETTIBONE GEAR

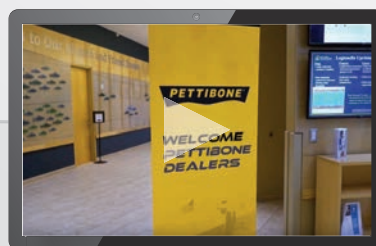
Have you been to the Pettibone Gear online store lately? We continue to make new items available, including some awesome product canvas prints and banners. Visit pettibonegear.com/collections/display to shop for the latest and greatest!

2019 PETTIBONE DEALER MEETING RECAP



We had a memorable and productive week with our dealers who traveled to the 2019 Pettibone Dealer Meeting in Houghton and Baraga, Michigan, in early June. The gathering included discussions of new product developments, interactive training sessions, and of course a lot of socializing and fun.

Thank you to all our dealers for your day-to-day contributions toward selling, servicing, and promoting Pettibone products!



Visit tinyurl.com/pettibone2019meeting to watch the recap video with highlights from the meeting!

PETTIBONE

TRAVERSE TELEHANDLERS

**MOVING YOU
FORWARD. >>>**



NEW PRODUCT UPDATE

Pettibone's New Workhorse: The Extendo 1246X



Pettibone has introduced the Extendo 1246X telehandler, a workhorse machine that delivers an impressive 12,000 pounds of load capacity. Built on Pettibone's next generation X-Series platform, this unit is ideal for contractors and rental users working in demanding applications ranging from construction to masonry to oil and gas.

The 1246X is powered by a 117-horsepower Cummins QSF 3.8 Tier 4 Final diesel engine. Mounted on a side pod, the engine offers easy service access while allowing exceptional curbside visibility and ground clearance of 19 inches. A 30-gallon fuel tank provides ample volume for a full day's work at 100-percent load.

Featuring an advanced boom design, the 1246X offers a maximum lift height of 46 feet, 6 inches, max forward reach of 30 feet, and max load capacity of 12,000 pounds. Formed boom plates provide the boom structure with greater strength while reducing weight. The design also minimizes boom deflection for better control and accuracy when placing loads.

Boom overlap is nearly double that of previous models to provide smoother operation and reduce contact forces on wear pads, thereby extending service life. A bottom-mounted external extend cylinder further reduces the load on wear pads by up to 50-percent. This cylinder location also provides greatly improved service access to internal boom components. Fastener-less wear pads also simplify service, and heavy-duty extension chains help ensure stable boom functions.



Pettibone's tried-and-true hydraulics deliver exceptional controllability and overall operating feel, while enhancing efficiency and cycle speeds. Cylinder cushioning dampens the end of strokes – both extending and retracting – to avoid the wear-and-tear of hard, jarring stops, while also helping prevent the potential spilling of a load. The telehandler also uses a single lift cylinder that improves operator sight lines, and has twin non-tensioned hydraulic lines for tilt and auxiliary plumbing.

Drivetrain and axles have been optimized to provide greater tractive effort with minimal tradeoff on top end speed. A pintle hitch

mount adds versatility for towing. Built for use on rough terrain, the unit offers full-time 4-wheel-drive with limited-slip front axle differential. Tight steer angle capability provides an efficient turning radius. The Dana VDT12000 Powershift transmission offers three speeds, forward and reverse.

The Extendo operator cab maintains Pettibone's ergonomic seat, pedal, joystick and steering wheel positions, while optimizing line of sight in all directions. A new analog/LCD gauge cluster comes standard. An optional 7-inch digital



display with integrated back-up camera is also available. The cab also offers enhanced climate control, flat bolt-in glass, split door design, openable rear window, USB accessory plug, lockable storage under the seat, and water-resistant components for easy interior washdown.

All-steel fuel and hydraulic tanks are built to resist damage, and the lockable fuel-fill is in a clean, accessible location. Other features include split-system electrical circuit panels, a 12-volt accessory plug in the engine bay, and heavy-duty bright LED lighting. Additional options include axle-mounted outriggers, solid or foam-filled tires, a sling hook for additional load security, and a wide variety of attachments.

2019 EVENTS

September
22-25
Minneapolis, MN



October
1-3
Louisville, KY



November
11-14
Abu Dhabi, United Arab Emirates



2020 EVENTS

February
4-7
Las Vegas, NV



February
10-12
Orlando, FL



March
10-14
Las Vegas, NV



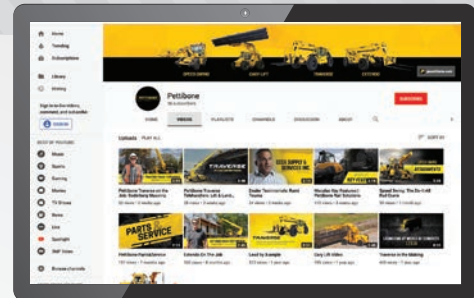
PETTIBONE®

PETTIBONE Traverse Lift, LLC
1100 Superior Ave.
Baraga, MI 49908

P: 800.GO.PETTIBONE
www.gopettibone.com

PRESS PLAY FOR PETTIBONE

Several new videos have been produced this summer and added to the Pettibone YouTube channel. Visit tinyurl.com/pettibone2019youtube to check them out, and be sure to share with your friends and colleagues!



The Pettibone Traverse is the only telehandler on the market with a horizontal traversing boom. This video covers the many benefits afforded by this technology.



The Mecalac 8MCR RR is now a part of Pettibone Rail Maintenance Solutions. This video demonstrates the key features of this rail-ready mini excavator.



The Pettibone Traverse T944X has been a big hit with Soderberg Masonry in Denver, Colorado. You can listen to Dan Oliver talk about his experience with the machine.



Pettibone boasts a highly experienced and dedicated Parts & Service team. This video talks about the department's unique approach to personalized customer support.



STAY CONNECTED WITH US!

PETTIBONE

gopettibone.com