



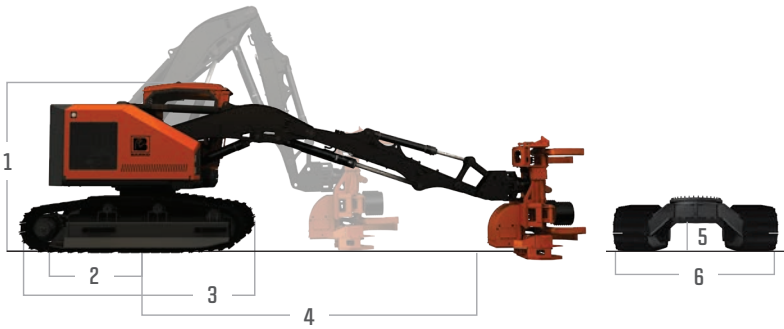
» 240 HARVESTER/ FELLER BUNCHER

SPECIFICATIONS



The Barko® 240 Track Harvester/Feller Buncher incorporates expertise from leading engineers, end users and forestry professionals. Featuring intelligent controls, intuitive maintenance features and a superior drawbar pull (better than 1.3:1 ratio), the Barko 240 is the most powerful machine in its weight class and offers industry-leading dependability.

SPECIFICATIONS



DIMENSIONS

1	Overall Height	10' 9" (328 cm)
2	Center to Rear of Counterweight	72" (183 cm) from swing center
3	Track Length	13' 1" (399 cm)
4	Boom Reach	21' 2" (645 cm) from attachment pin to swing center
5	Ground Clearance	26.2" (66.5 cm)
6	Overall Width	9' 4" (284 cm) with 600 mm pads
	Undercarriage Size/Pitch	D-5, 7.5" (190 mm)
	Approx. Operating Weight	45,000 lbs (20,412 kg) without attachment

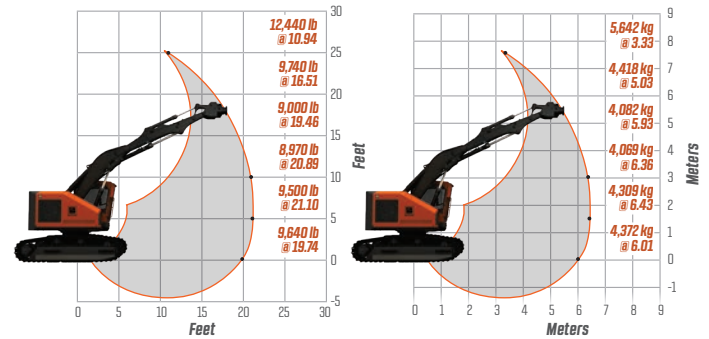
ENGINE

Model/Power	220 HP (164 kW) Cummins® QS86.7 Tier III
Cooling Package	Fan : 36" (914 mm) diameter Flexaire® reversible fan – pneumatically operated, IQAN® system controlled, engine driven
	Heat Exchanger : 3 Cores – CAC, radiator & hydraulic. Pressure bypass integrated in system valve manifold for hydraulic cooler
Fuel Tank	130 gal. (492 L)

HYDRAULICS

System	IQAN: infinite variable control, individual operator settings, onboard diagnostics
Main Pump	Load sensing pressure compensated operating at 4,500 psi (310 bar)
Secondary Pump	Dedicated for head functionality
Tank	120 gal. (454 L)

BOOM SWEEP



PERFORMANCE

Maximum Tractive Effort	65,833 lbf (298.6 kN) (gross)
Drawbar Pull	1.3 to 1 ratio
Ground Pressure	7.63 psi (600 mm shoes)
	6.54 psi (700 mm shoes)
Maximum Travel Speed	2.47 mph (3.98 km/h)
Swing System	Continuous rotation with dual swing drives
Swing Torque	50,787 ft-lbf at 3,770 psi (68,858 Nm at 260 bar)
Swing Bearing	Heavy-duty, oversized, 53.5" (1,359 mm) outside diameter

FEATURES & OPTIONS

OPERATOR CAB

Patent-pending forward-sliding design 5" (12.7 mm) Lexan® (harvester) or 1.25" (31.75 mm) Lexan (feller buncher) with air knife system Oversized skylight, sliding rear window	Exterior LED lighting Heated air-ride seat Large access door AM/FM radio with MP3 auxiliary In-cab storage, cup holder, cell phone holder Dome light
--	---

STANDARD FEATURES

On-board air compressor with work tool capability	Tool storage areas under cab and track frames Sloped cowling
---	---

OPTIONS

Barko CF-18 fixed harvesting head OEM fixed, dangle and feller buncher heads Proheat® Hydraulic tank vacuum pump Electric fill pump	Fire suppression Various track shoe options in 600 mm & 700mm widths Rear-view camera with 7" display SiriusXM® radio Front window shade
---	--

* Specifications are subject to change.



BARKO HYDRAULICS, LLC

One Banks Ave.
Superior, WI 54880

P: 715.395.6700
info@barko.com | www.barko.com